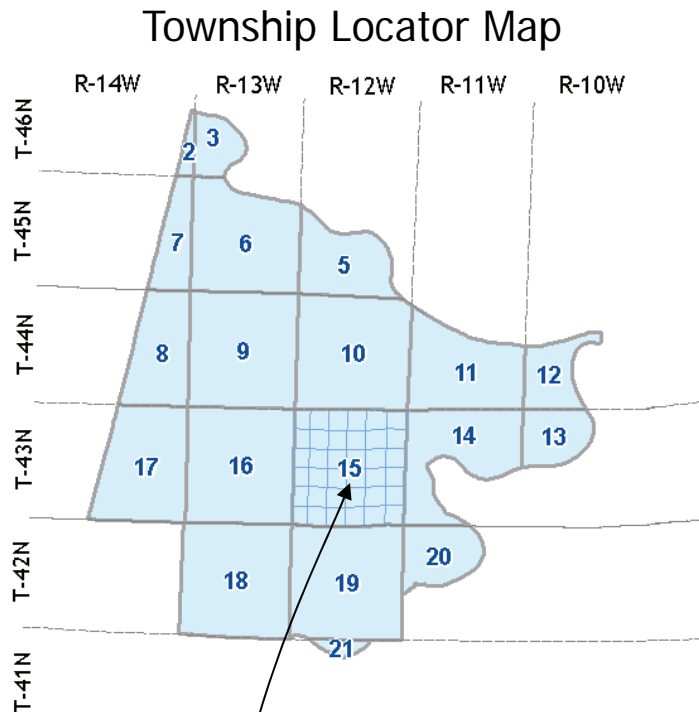


Cole County Assessor Land Parcel System



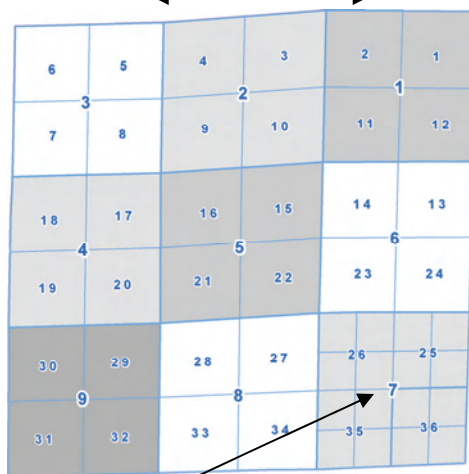
Township Conversion

TWP	RNG	LOC #
46	14	2
46	13	3
45	13	3
45	13	6
45	12	5
44	14	8
44	13	9
44	12	10
44	11	11
44	10	12
43	14	17
43	13	16
43	12	15
43	11	14
43	10	13
42	13	18
42	12	19
42	11	20
41	12	21

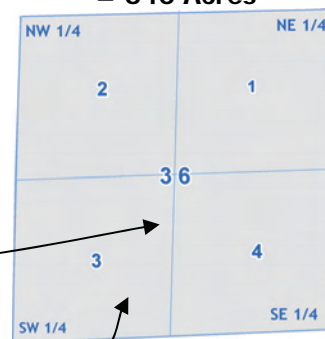
This illustration shows how to locate a specific land parcel using the Parcel Number system. The Cole County Assessor uses this system of numbers to identify land parcels and their locations.

The Parcel Number listed above can be found in the Southwest part of section 36 in Township 17. Township 17 is defined by Township & Range lines T43N · R12W.

One Township = 6 Miles



One Standard Section = 640 Acres



Parcel Number

48 15 07 36 0003 003 001

County # Twp # Area # Sec # 1/4 Section # Block # Parcel #

One Section = 640 Acres
1 Mile = 320 Rods, 5280 Feet, 80 Chains